



K-8 Realignment Update



Redefine • Redesign • Reimagine

October 2024

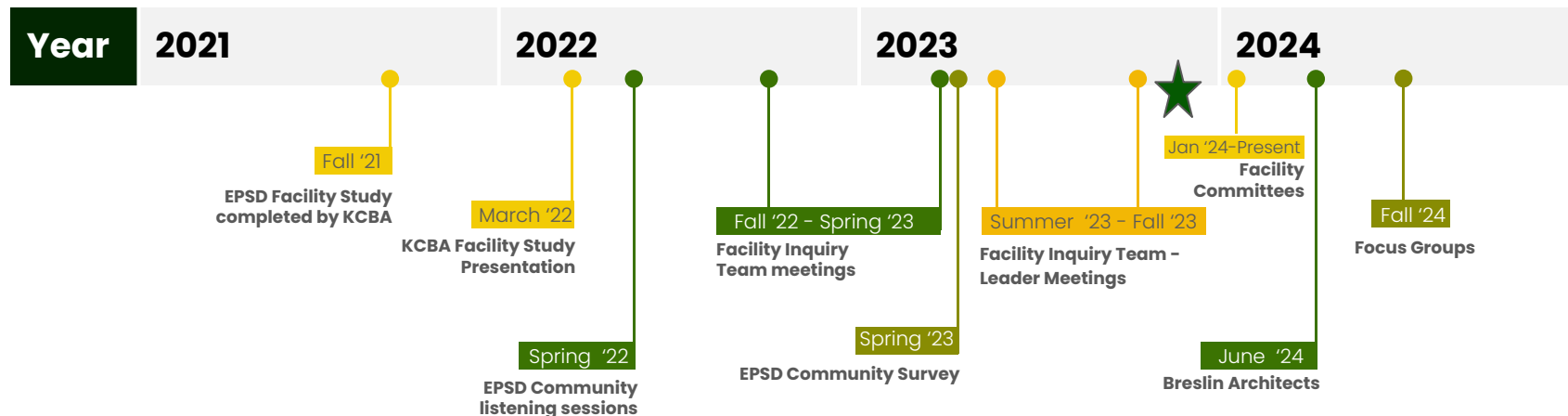
Agenda

Redefine • Redesign • Reimagine

- Brief history of facilities planning
- Facilities project schedules & milestones
- K-8 programmatic overview
- Next steps
- Future facility considerations

Background: Timeline of facilities planning

Redefine • Redesign • Reimagine



K-8 Realignment Plan

Redefine • Redesign • Reimagine

- K-4 Elementary Schools
- 5/6 Center and 7/8 Center



Eyer 5-6 Center Additions & Renovations

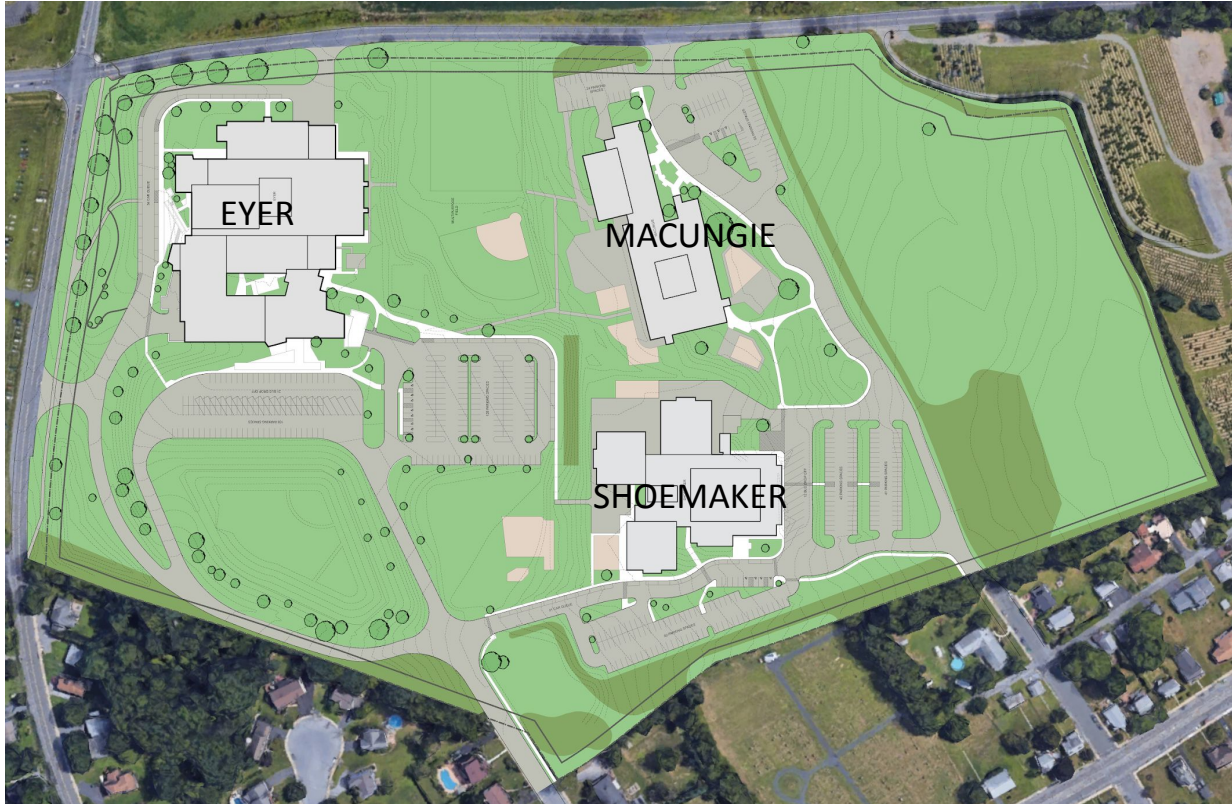
Redefine • Redesign • Reimagine



- Classroom Addition
- Renovate central core of building
- Provide renovations and Capital Improvements for upgrades to the physical building and site and for requirements related to Building and Accessibility Code Compliance throughout the existing school as indicated in previous Feasibility Study.
- Site Circulation Improvements

Eyer Existing Site Plan

Redefine • Redesign • Reimagine



LMMS 7-8 Center Additions & Renovations

Redefine • Redesign • Reimagine



- Classroom Addition
- Expand and renovate Cafeteria
- Gymnasium Addition
- Provide renovations and Capital Improvements for upgrades to the physical building and site and for requirements related to Building and Accessibility Code Compliance throughout the existing school as indicated in previous Feasibility Study.

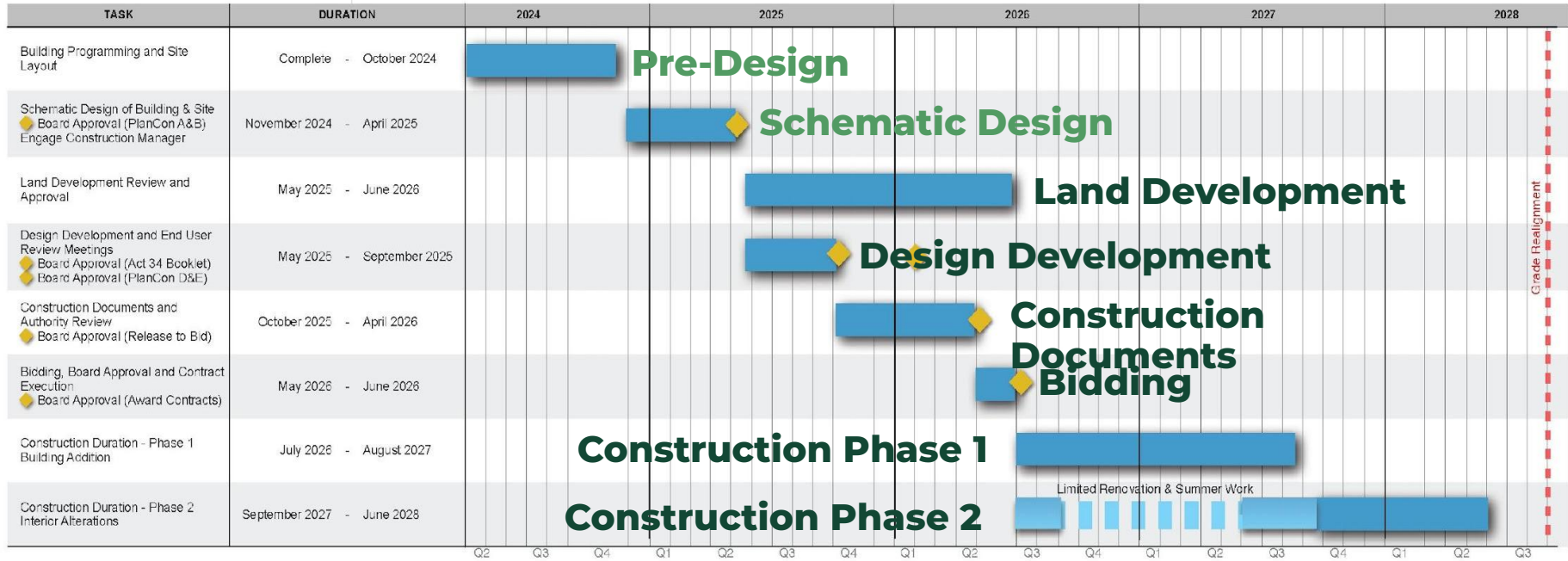
LMMS Existing Site Plan

Redefine • Redesign • Reimagine



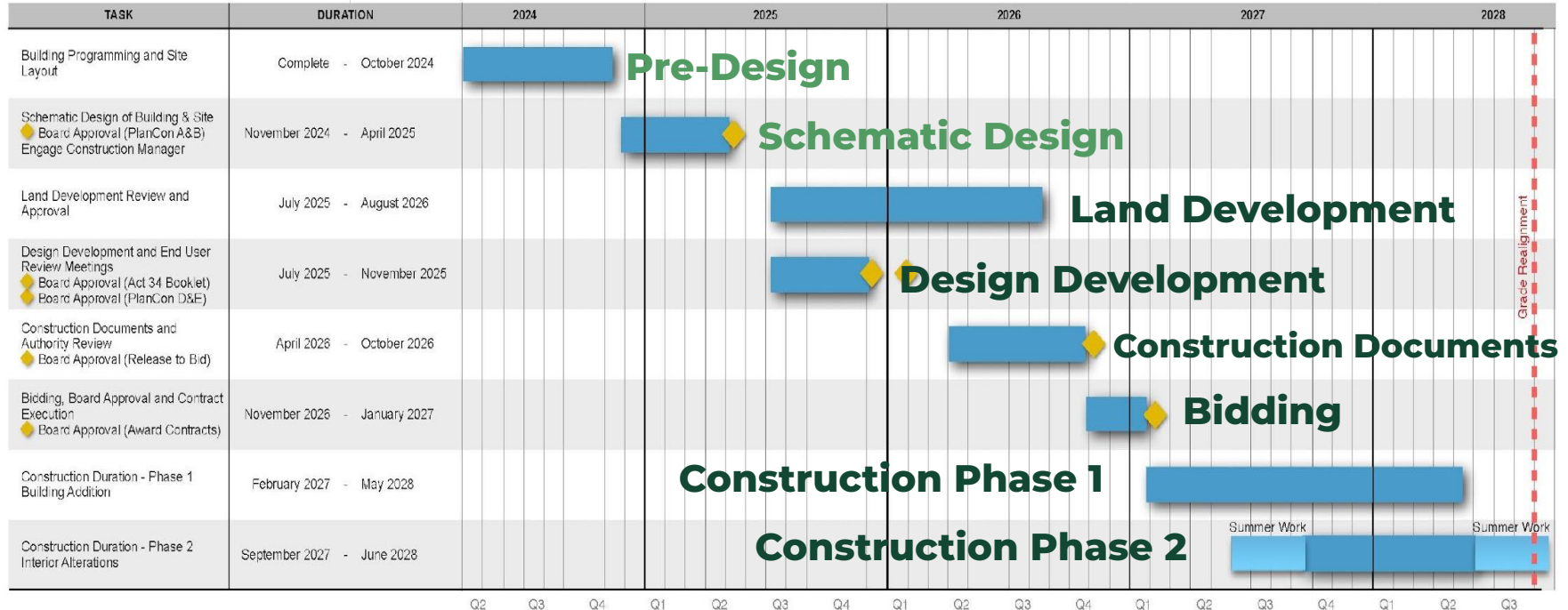
Schedule: Project 1

Redefine • Redesign • Reimagine



Schedule: Project 2

Redefine • Redesign • Reimagine



Upcoming Milestones

Redefine • Redesign • Reimagine

TASK	DURATION	2024						2025					
		JUL	AUG	SEPT	OCT	NOV	DEC	JAN	FEB	MAR	APR	MAY	JUN
PROGRAMMING PHASE	July 2024 - October 2024												
Educational Specification	Sep 1, 2024 - Oct 31, 2024												
Final Building Program	Nov 13, 2024 - Nov 13, 2024												
Existing Space Review	Sep 3, 2024 - Oct 4, 2024												
Eyer Campus Traffic Study	Nov 13, 2024 - Dec 18, 2024												
Construction Manager Proposal & Interviews	Nov 11, 2024 - Jan 21, 2025												
Appoint Construction Manager	Jan 27, 2025 - Jan 27, 2025												
SCHEMATIC DESIGN PHASE	November 2024 - April 2025												
Concept Design	Nov 13, 2024 - Feb 28, 2025												
Schematic Design Drawings	Mar 1, 2025 - Apr 7, 2025												
District & CM Review	Apr 7, 2025 - Apr 25, 2025												
Board Approval of Schematic Design	Apr 28, 2025 - Apr 28, 2025												

Redefine • Redesign • Reimagine

Programmatic Planning

Steering Committee

Redefine • Redesign • Reimagine

K-4 Logistics,
schedule and
program

5-6 Logistics,
schedule and
program

7-8 Logistics,
schedule and
program

K-8 MTSS:
Academics and
Special Education

K-8 MTSS: SEL,
Wellness and
Behavior

K-8 Athletics and
Activities

K-8
Specials/Related
Arts: Program and
Space Design

Transportation

Redistricting

Communications

Future Phase: 7-8
Learning
space/Classroom
design

Future Phase: 5-6
Learning
space/Classroom
design

Guiding questions

Redefine • Redesign • Reimagine

Opportunities

- Do existing structures demonstrate the intended outcome of increased opportunities for students?
- How does this structure broaden accessibility for all students?

Academics

- How does this structure align to research-based and evidence-based practices?
- How does this structure reflect the future vision of education?
- How will we ensure that all buildings offer equitable learning opportunities for all students?

Equity

- How does this structure broaden inclusivity and a sense of belonging for all students?
- How does this structure ensure that all K-8 students have access to rigorous academics, close gaps, and meet high expectations?



Finances

- How does this structure reflect a financially feasible and sustainable option for the district?
- Does this structure reflect alignment between our financial resources and district priorities?

Programmatic Planning

Redefine • Redesign • Reimagine

- ▶ January 2024- Present- Committee work ongoing
- ▶ Educational Specifications
- ▶ Educational programming
- ▶ Stakeholder focus groups

Next Steps

Redefine • Redesign • Reimagine

- Winter 2025– **Appoint construction manager**
- Winter 2025– Educational programming presentation & updated financials
- Spring 2025– **Approve schematic design**
- Future facility considerations (Capital Plan & beyond)

Redefine • Redesign • Reimagine

QUESTIONS





K-8 Realignment Update



Redefine • Redesign • Reimagine

October 2024